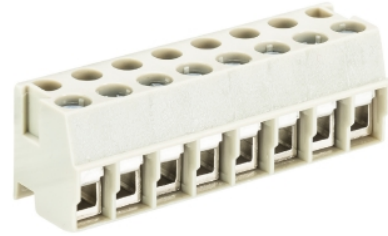


Data sheet

Commercial Art.No.: 25.600.3653.0

Pluggable PCB Terminal 8142 / 16

Pluggable-PCB terminal with screw connection with wire protection, 16 poles, printed version, max. cross section: 2.5 mm², pitch: 5 mm, type of packing: carton, color: grey



Certificates / Approvals



Technical data

General

Modular spacing	5 mm
Connection type	Screw connection
Soldering process	None
Packaging	Carton
Number of poles	16
Marking	Yes
Mating direction towards connector	90°

Technical data

Nominal cross section	2.5 mm ²
Rated current	8 A
Overvoltage Category I	1000 V
Overvoltage Category II	250 V
Overvoltage Category III	200
Rated impulse voltage	4 kV
Wire strip length	5 mm

Connection Data

Minimum cross section solid	0.14 mm ²
Maximum cross section solid	4 mm ²
Minimum cross section fine stranded	0.14 mm ²
Maximum cross section fine stranded	2.5 mm ²
Wire strip length	5 mm

Technical Data UL/CSA

Cross section UL	22-12 AWG
Voltage UL	300 V
Current field wiring	15 A
Current factory wiring	15 A
Cross section CSA	22-12 AWG
Voltage CSA	300 V

Current CSA	15 A
-------------	------

Other

Type of insulation material	Thermoplastic
Color	Grey
Height	13 mm
Length	80 mm
Depth	11.5 mm
Material attachment screw	Steel
Material contact base	CuSn
Material contact surface	Sn

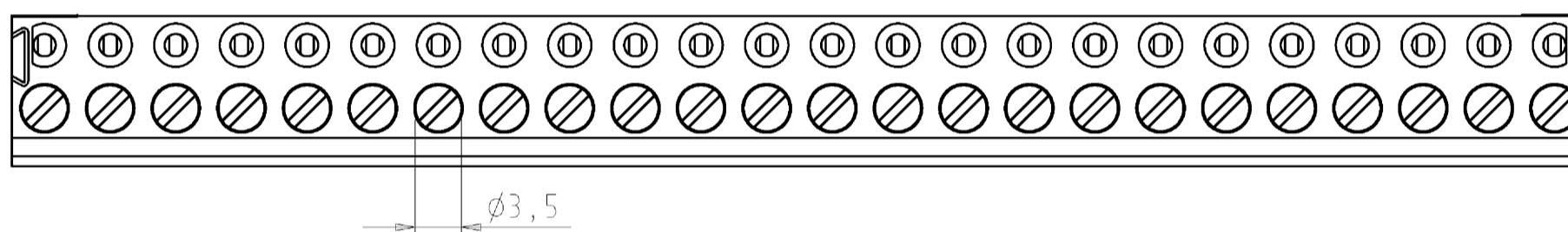
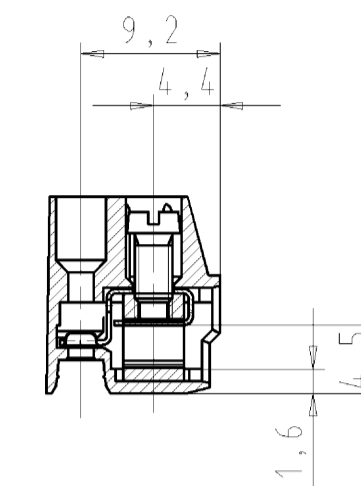
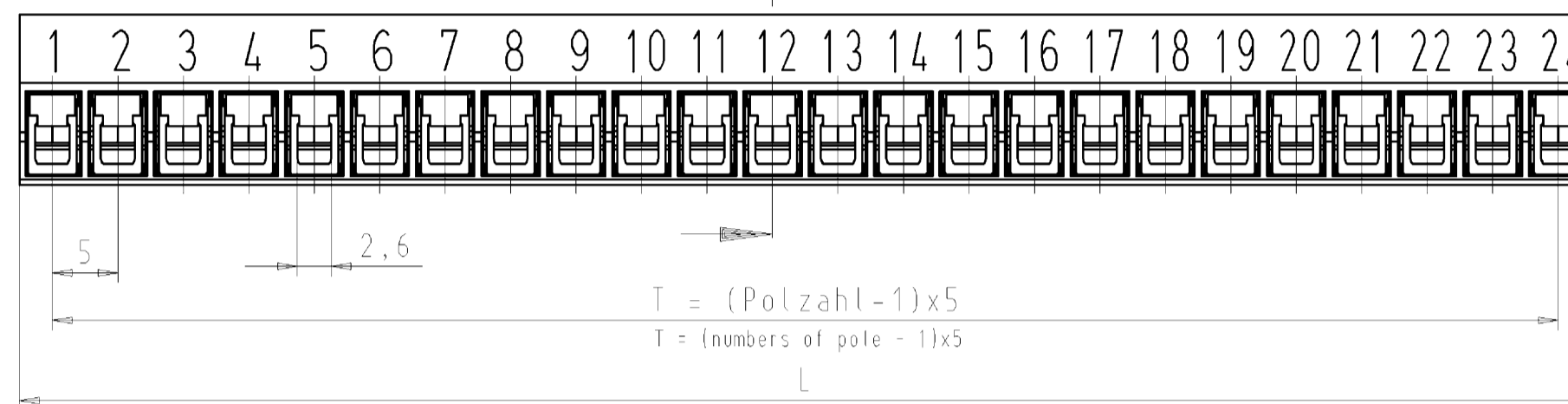
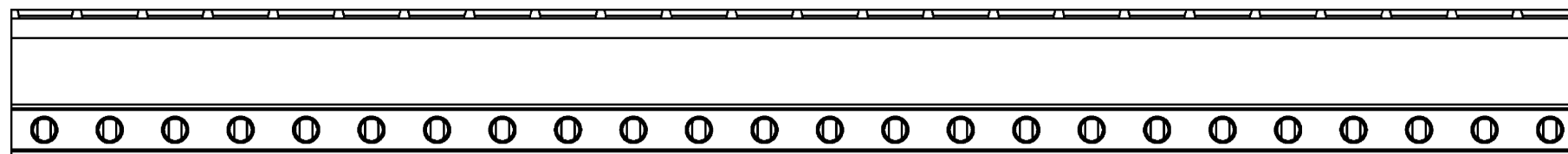
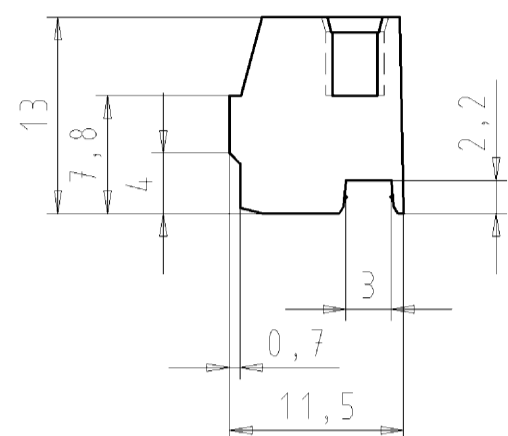
Classification

ECLASS 11	
ECLASS 8.1	27440402
ETIM 7.0	EC002637
ETIM 6.0	EC002637
ETIM 5.0	EC002637

Product compliance

ROHS conformity status	Compliant/Exempted
ROHS exceptions	III-6(c)
REACH-SVHC conformity status	Duty-To-Declare
REACH-SVHC substances	Lead
REACH-SVHC CAS numbers	7439-92-1

Gezeichnet/drawn:
25.600.4453.0



25.600.4453.F	8142/24	24	115	120
25.600.4353.F	8142/23	23	110	115
25.600.4253.F	8142/22	22	105	110
25.600.4153.F	8142/21	21	100	105
25.600.4053.F	8142/20	20	95	100
25.600.3953.F	8142/19	19	90	95
25.600.3853.F	8142/18	18	85	90
25.600.3753.F	8142/17	17	80	85
25.600.3653.F	8142/16	16	75	80
25.600.3553.F	8142/15	15	70	75
25.600.3453.F	8142/14	14	65	70
25.600.3353.F	8142/13	13	60	65
25.600.3253.F	8142/12	12	55	60
25.600.3153.F	8142/11	11	50	55
25.600.3053.F	8142/10	10	45	50
25.600.2953.F	8142/9	9	40	45
25.600.2853.F	8142/8	8	35	40
25.600.2753.F	8142/7	7	30	35
25.600.2653.F	8142/6	6	25	30
25.600.2553.F	8142/5	5	20	25
25.600.2453.F	8142/4	4	15	20
25.600.2353.F	8142/3	3	10	15
25.600.2253.F	8142/2	2	5	10
Teile-Nr. part-no.	Typ type	Polzahl pole	T	L

.F	Farbe/colour
.0	grau/grey
.1	schwarz/black
.9	orange/orange

Weitere Daten siehe Katalog
further data see catalog

Tolerierung Size ISO 14405/Tolerance system Size ISO 14405 (This ISO-standard describes the envelope principle. According to the envelope principle the deviations of form and parallelism are limited by the size tolerances).		ja/yes <input checked="" type="checkbox"/> Stoffverfalls- und Deklarationsliste nach UU-TQM-05/03 ist einzuhalten. Conformity with Wieland document UU-TQM-05/03 (list of prohibited / declarable hazardous substances) to be declared!																
Freitoleranz nach DIN ISO 2768 - m	CAD - Zeichnung, keine manuellen Änderungen CAD - drawing, no manual modifications allowed	1. Verwendung: First Use: -																
<table border="1"> <tr><td>Werkstoff/Material</td><td>2012</td><td>Tag/Date</td><td>Name</td></tr> <tr><td>gezeichnet/drawn</td><td>12.12.</td><td>Dutsch T.</td><td></td></tr> <tr><td>geprüft/checked</td><td>-</td><td>-</td><td>-</td></tr> <tr><td>Werkst. Stand. check</td><td>-</td><td>-</td><td>-</td></tr> </table>		Werkstoff/Material	2012	Tag/Date	Name	gezeichnet/drawn	12.12.	Dutsch T.		geprüft/checked	-	-	-	Werkst. Stand. check	-	-	-	Blatt: 1 von 1 Sheet: 1 of 1
Werkstoff/Material	2012	Tag/Date	Name															
gezeichnet/drawn	12.12.	Dutsch T.																
geprüft/checked	-	-	-															
Werkst. Stand. check	-	-	-															
<table border="1"> <tr><td>Zeichnung Nr./Drawing No.</td><td>Index</td></tr> <tr><td>T 25.600.2253.0 01K</td><td></td></tr> </table>		Zeichnung Nr./Drawing No.	Index	T 25.600.2253.0 01K		Maße in mm/Dimensions are in mm												
Zeichnung Nr./Drawing No.	Index																	
T 25.600.2253.0 01K																		
<table border="1"> <tr><td>Vol.</td><td>mm</td><td>Offl./Surf.</td><td>mm</td><td>Ersatz für/Replacement for:</td></tr> <tr><td></td><td></td><td></td><td></td><td></td></tr> </table>		Vol.	mm	Offl./Surf.	mm	Ersatz für/Replacement for:												
Vol.	mm	Offl./Surf.	mm	Ersatz für/Replacement for:														
<table border="1"> <tr><td>Benennung/Title</td><td>PLUGGABLE PCB TERMINAL LP_STECKKLEMME</td></tr> <tr><td>2 - 24 polig/poles</td><td></td></tr> </table>		Benennung/Title	PLUGGABLE PCB TERMINAL LP_STECKKLEMME	2 - 24 polig/poles														
Benennung/Title	PLUGGABLE PCB TERMINAL LP_STECKKLEMME																	
2 - 24 polig/poles																		
<table border="1"> <tr><td>Änderung/Revision</td><td>Index</td><td>Datum / Blatt / Date / Sheet</td></tr> <tr><td></td><td></td><td></td></tr> </table>		Änderung/Revision	Index	Datum / Blatt / Date / Sheet				<table border="1"> <tr><td>Elektrische Verbindungen</td><td>s. Tabelle see table</td></tr> </table>	Elektrische Verbindungen	s. Tabelle see table								
Änderung/Revision	Index	Datum / Blatt / Date / Sheet																
Elektrische Verbindungen	s. Tabelle see table																	

Weitergabe sowie Vervielfältigung dieses Dokuments, Verwertung und Mitteilung
 seines Inhalts sind verboten, soweit nicht ausdrücklich gestattet.
 The reproduction, distribution and utilization of this document as well as the
 communication of its contents to others without express authorization is prohibited.